
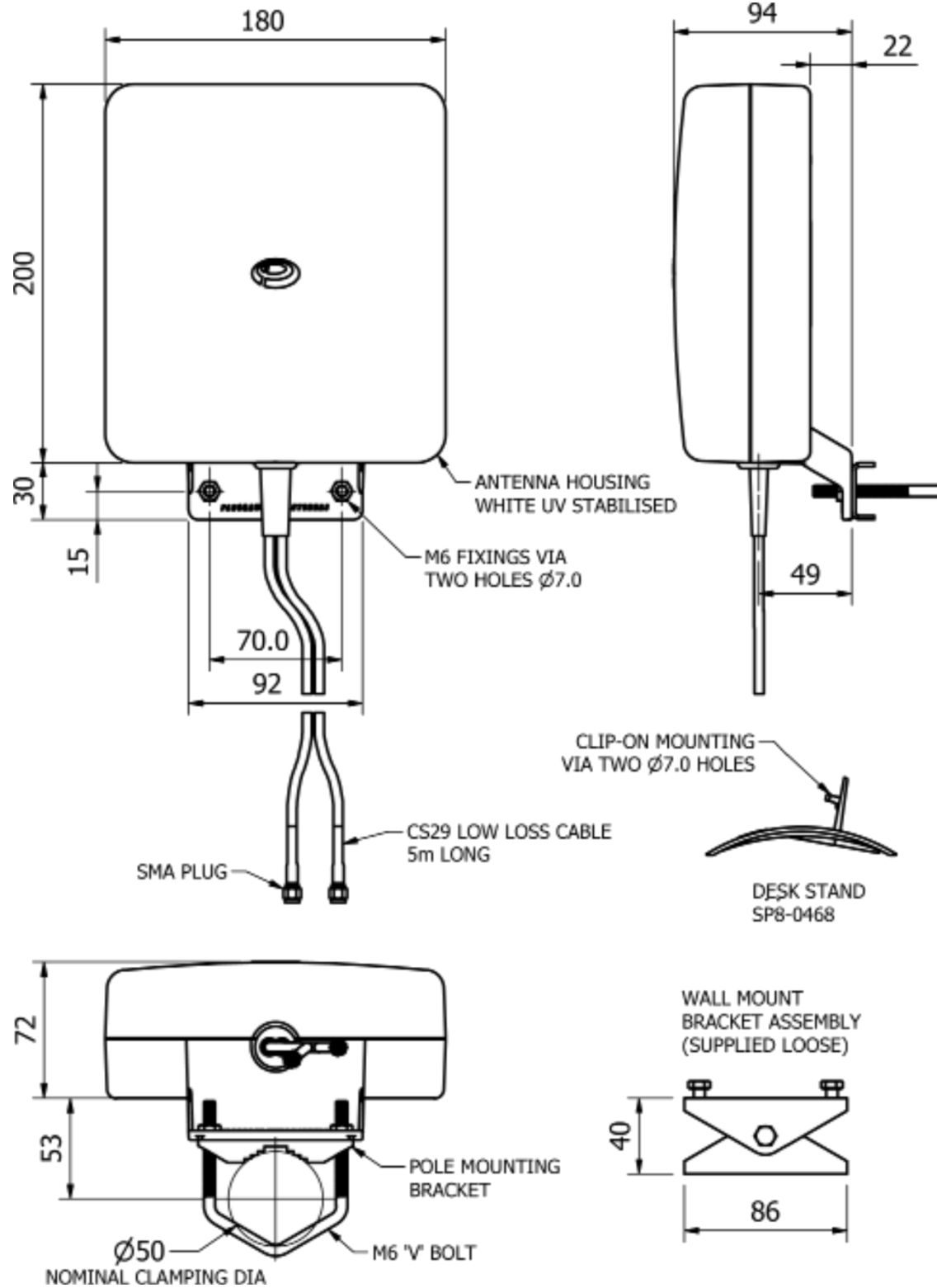


LTE-MiMo Außenantenne



Technical Data	
GSM 698-960 MHz, 1710-2700 MHz	
MiMo & Diversity antenna, wall mount	
GSM	Frequency Range
	698 - 960 MHz 1710 - 2700 MHz
	Gain
	698 - 960 MHz 6dBi 1710 - 2700 MHz 9 dBi
	Operational bands
	2G / 3G / 4G
	Efficiency
	> 65%
	Correlation coefficient
	< 0.05
	Power Max.
	20 W
	Impedance
	50 Ω
	Radiation pattern
	Directional
Mechanical Data	
	Dimensions (HxWxL)
	230 mm x 180 mm x 94 mm
	Operating temp
	-30°C .. +70°C
	Material
	U.V. stable, impact resistant ASA
	Cable
	2x ca. 5 m: CS29 (double shielded RG58)
	Connector
	2x SMA (male)
	
	Wall / desk / mast mount
	RoHS compliant
Artikel Nummer	432-00



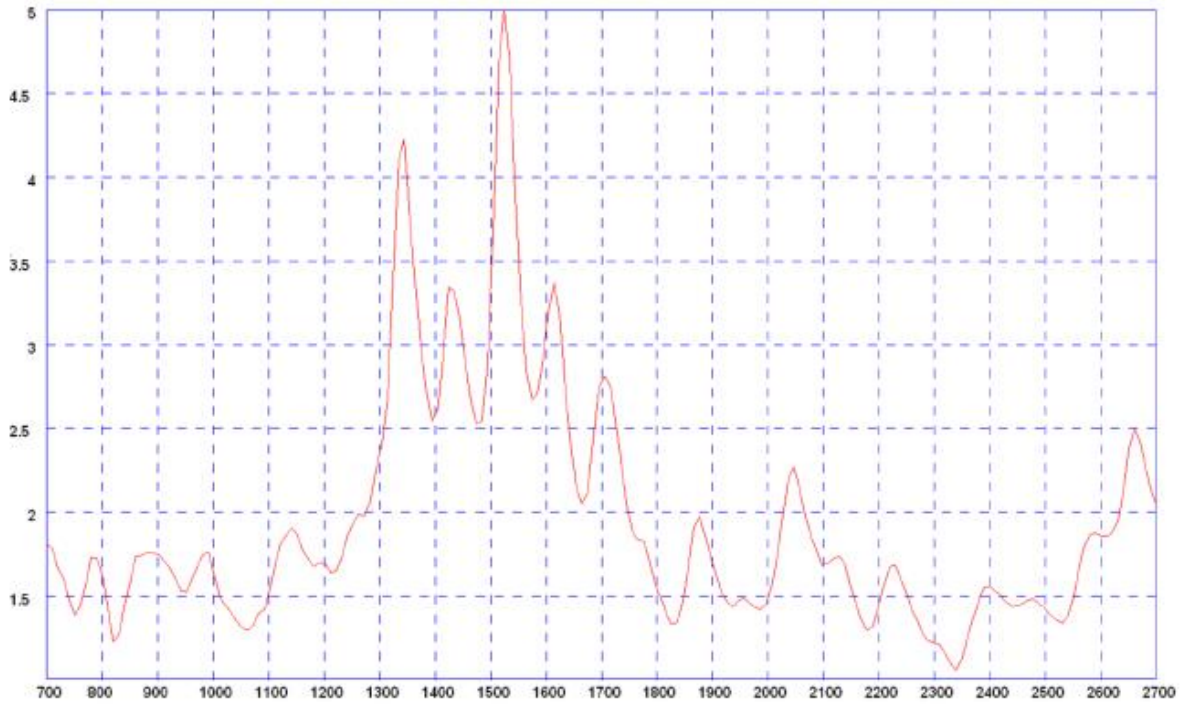


Figure 2; typical VSWR elements 1 & 2
* VSWR measured with 0.5m cable

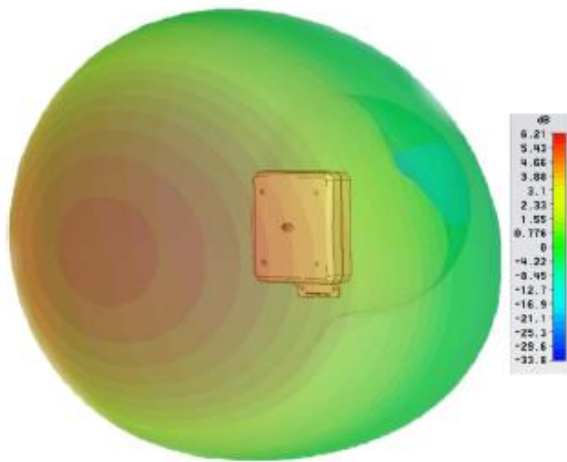


Figure 3; 3D gain plot (750MHz)

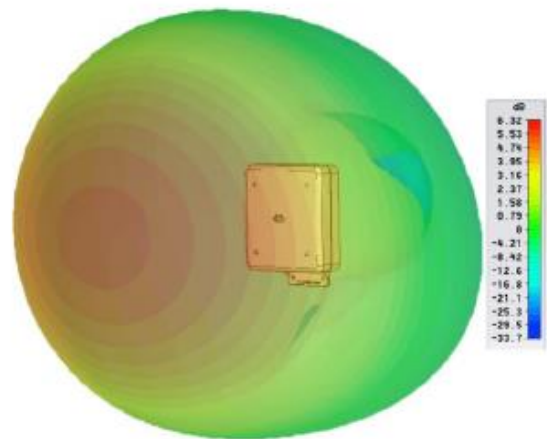


Figure 4; 3D gain plot (850MHz)

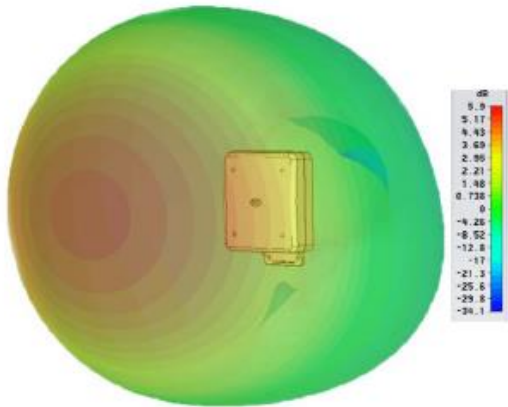


Figure 5; 3D gain plot (950MHz)

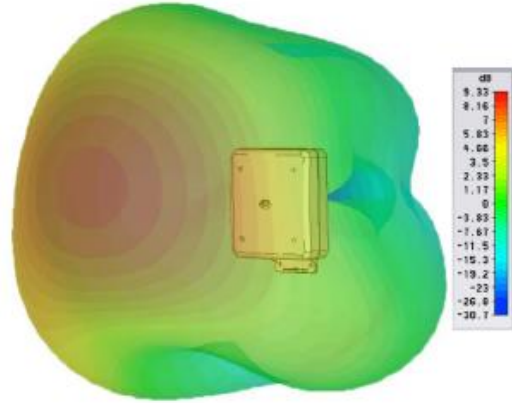


Figure 6; 3D gain plot (1850MHz)

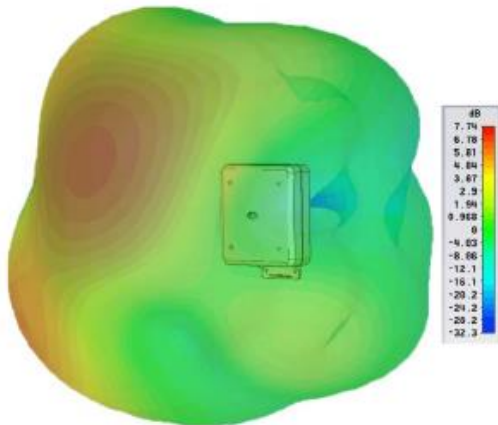


Figure 7; 3D gain plot (2100MHz)

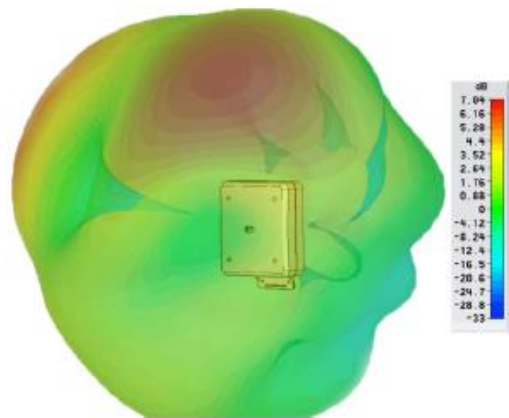


Figure 8; 3D gain plot (2600MHz)

* 3D patterns show realized gain both elements fed